



Profile Select

Liquid Compound

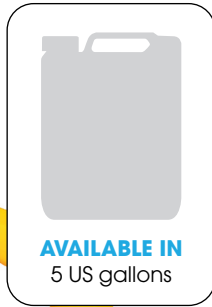


Product Description

Profile Select Liquid Compound performs best when shaken before use and run at high speed (2000 - 3500rpm). It is a great value, versatile cutting compound aimed at OEM applications.

Used with a G Mop Twisted Wool Compounding Pad, Profile Select quickly removes P800 or finer sanding marks from tooling or production gel coats in a one-step process.

On painted surfaces, used with a G Mop Lambs Wool Pad, it will very quickly remove P1500 sanding marks and leave a good finish which can be enhanced with Profile Finish if desired.



Product Information

Size	Code	Ctn Qty
1 ltr	PRS101	6
1 US gallon	PRS106	2
5 US gallons	PRS506	1

Key Benefits

- | | |
|--------------------------|---|
| • Great Value | New technology gives a high performance at a value price |
| • Versatile & Swirl Free | Excellent on tooling and production gel coats, painted surfaces and solid surfaces including artificial marble, Corian etc |
| • One-Step on Gel Coats | Removes P800 or finer sanding marks in a one-step process on tooling gel coats |
| • Fast Acting | Run at HIGH SPEED (2000 to 3500rpm) for a superfast cut on gel coats (Twisted Wool Pad) or painted surfaces (Lambs Wool Pad) |
| • Minimal Throw Off | Clean in use, pad loads evenly |



Use With

Machine Application



G Mop 8" Twisted Wool Pad - Double Sided
GMW806



G Mop 8" Twisted Wool Pad - Single Sided
GMW801



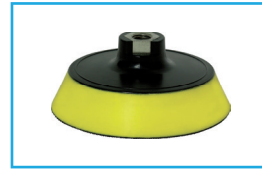
G Mop Lambs Wool Pad
GML301 (3" foam)
GML601 (6" foam)
GML801 (8" foam)



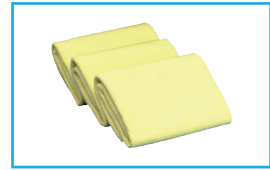
Adaptor for G Mop 8" Double Sided Wool Pad
GMA014 (14mm thread)
GMA058 (5/8" thread)
GMA016 (16mm thread)



G Mop Flexible Back Plate for 8" Pads
GMB814 (14mm thread)
GMB858 (5/8" thread)
GMB816 (16mm thread)

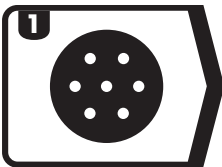


G Mop Back Plate with Yellow Interface for 6" Pads
GMB614 (14mm thread)
GMB658 (5/8" thread)
GMB616 (16mm thread)

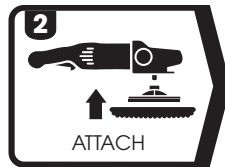


Farécla Finishing Cloth
FC-3 (3 x cloths)

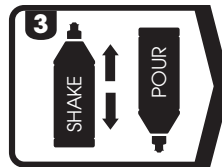
How To Use



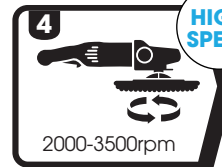
1 Sand area - Profile
Select removes up to P800



2 Attach G Mop 8" Single Sided Wool Pad to a polisher



3 Shake well and apply to the pad and surface



4 Prime pad with product and compound at 2000 to 3500rpm



5 Wipe clean with a Finishing Cloth

*It is always recommended to test on an inconspicuous area prior to general use

Technical Information

Appearance: **White liquid**
Viscosity: **High viscosity**
VOC Content: **177g/L**
Relative Density: **1.1**
pH: **2.4 - 4.5**
Surface Types: **Tooling and production gel coats, painted surfaces & solid surfaces**

Additional Information

Clean applicators before and after use with a Spurring Brush to prevent dried product damaging the surface being worked on.



Spurring Brush
109005